

123 Lock-Down Latch Installation



Installation Video

https://youtu.be/-dK7_K00wjA

Supplies: you will need a pencil, level, template, 2 screws (supplied), 123 Lock-Down Latch, and a power screwdriver.

1

Line up and level the template.

- With a level, draw a line with the pencil where you plan to install the 123 Lock-Down Latch.
- With the door closed, insert the template between the door and the door jamb, until it stops at the inner aspect of the door frame. Make sure it is lined up with the level line. At least part of the light gray area at the end of the template must be visible. If it is completely covered by the door jamb or weather stripping, pull the template out until you can see the gray area.

2

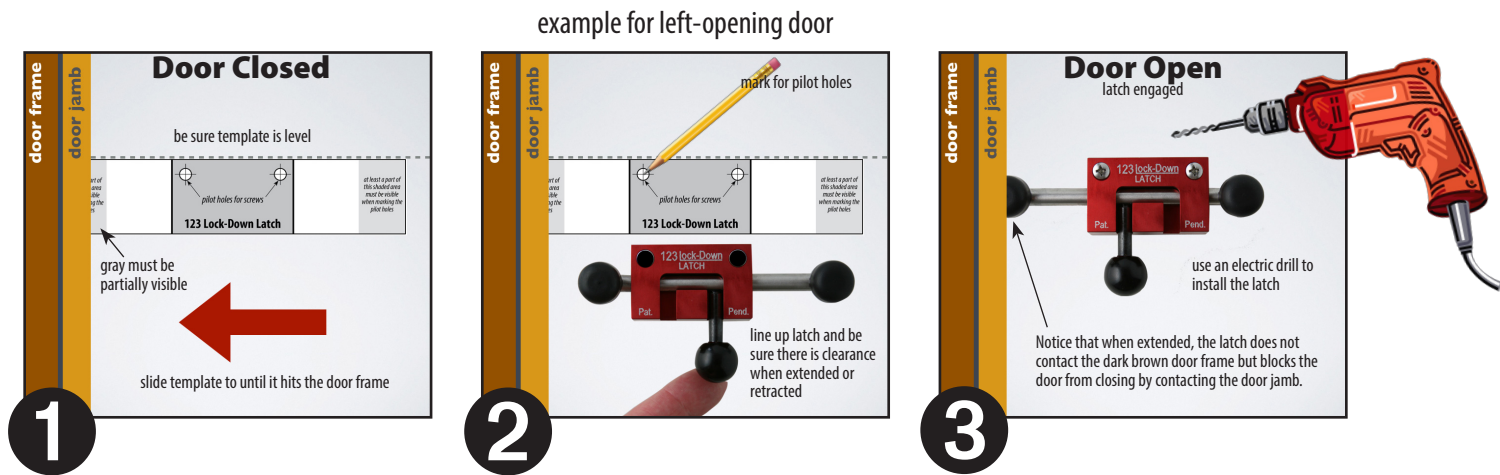
Double-check that there is proper clearance for the latch.

- Before marking the pilot holes, line the 123 Lock-Down Latch up to the template and make sure that the bumper is in the extended position, it is covered (at least partially) by the doors jamb and when the bumper is in the retracted position, it is clear and free. Diagram #2 shows the latch in the retracted position and in diagram #3, it is in the extended position.

3

Attach the 123 Lock-Down Latch.

- Use a pencil to mark the two pilot holes for the 1/8 inch metal screws.
- Remove the template.
- Use a drill and secure the latch to the door.
- Double check that the bumpers keep the door from locking when fully extended and allow the door to close when fully retracted.



for left opening doors, line this end up with inner door frame

Template

for right opening doors, line this end up with inner door frame



Contact the 123 Lock-Down Latch company if you have any installation issues (cory@lockdownlatch.com). The company is not responsible for improper installation, use, or removal of the 123 Lock-Down Latch. The company makes no representations or warranties, expressed or implied. Be sure all applicable laws, fire codes, local policies and regulations are followed.